

This guide is for:

ASCEND, AIMsi,  
CAM Commerce,  
and EDGE Local  
point of sale programs

# VLC posUplink™ Self Installation Guide

The process for downloading, installing, and configuring posUplink™ is very simple and should take no more than a few minutes each step.

## WHERE TO INSTALL

Install posUplink™ on the computer where your POS software resides and hosts the database for your POS.

Multi-location retailer needs to install posUplink™ on the local server at each store.

## BEFORE YOU START

Have ready the database connection parameters for your POS system:

**Server Name**

**Database Name**

**User Name and Password**

## EASY INSTALL STEPS

1. **Download posUplink™** (link and instructions pg2)
2. **Install posUplink™** (save to programs folder)
3. **posUplink™ secure store configuration** (server/database/user)
4. **Configure POS information** (POS version etc.)

## INSTALLED — NOW WHAT?

After the configuration is complete, no further action will be required on your part as the program runs automatically in the background.

### install tips

**If you cannot install on the host machine** or have problems with network connection setup, contact us at [support@vlcycling.com](mailto:support@vlcycling.com)

**If you have changed these values from the defaults** used when the POS system was first deployed, confirm the current settings. Need help finding parameters? Please contact us at [support@vlcycling.com](mailto:support@vlcycling.com)

**UPCs!**  
Get the most out of listing your store by keeping inventory up-to-date and entering UPCs and MPNs.



for the  
cycling  
industry

# INSTALL STEPS

## install tips

### 1. Download posUplink™

Go to [www.amlbs.com](http://www.amlbs.com) and select  at bottom of page, (or go to <http://www.vlcyling.com/downloadsintro.php>).

Then select your POS to start download of your posUplink.

Select the ZIP compressed version (or download self-extracting file).

If your network blocks the self-extracting file, email [support@vlcy-cling.com](mailto:support@vlcy-cling.com) and we will help you find a solution.

### 2. posUplink™ installation

Open the G9 posUplink™ folder.


Double-click G9 posUplink™ Installer.

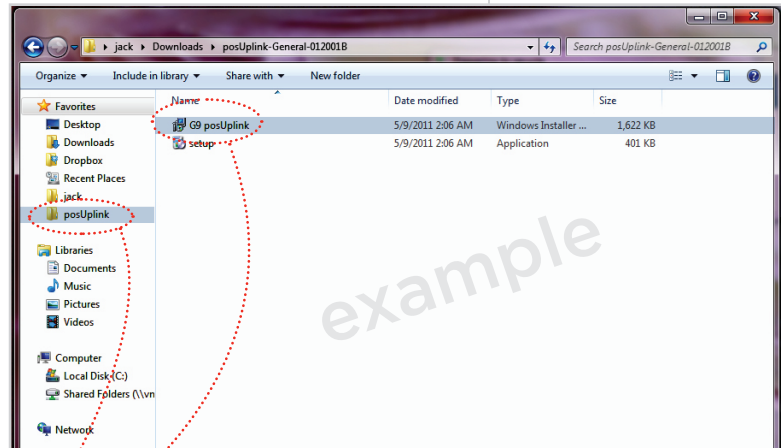
Follow the sequence of four screens that appear, and their instructions.

Accept defaults (unless Program files are in different location).

Click 'Always Allow' (or equivalent) to Windows security or anti-virus dialogs that might come up, so that program will run without future intervention.

Click "Close" to exit the installer utility.

Go to  menu, then "All Programs", find and select "G9 posUplink".



posUplink™ will check for any updated program configuration files. If so, it will download these in background.

If firewall alerts are triggered, use firewall's UI to indicate posUplink™ should always be allowed to perform this action.

### 3. Fill in Store Information

**Store Name** identifies shop where installation is taking place

**Owner Name** verifies account

**City, Phone and Email** uniquely defines each install and matches entry to our records

**Account Name**; enter with no spaces or punctuation. Select any name that ties back to Store Name and/or location.

**Remaining fields** (optional) assists VLC in contacting you when new features are rolled out, or there are technical issues to resolve.

DON'T HIT SAVE YET, go to **POS System** tab and then see step #4

**Account Name** must be unique for each store, multi-stores should include location in name. Example "RazmatazPaloAlto" or "RazmatazIrvine"



for the  
cycling  
industry

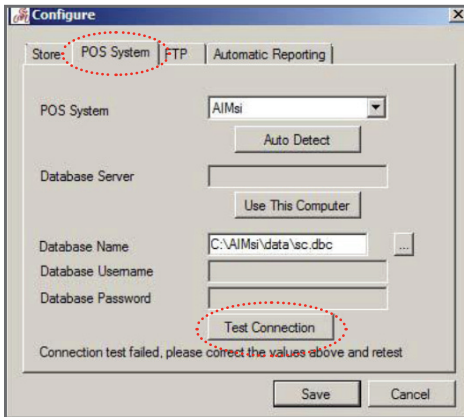
## 4. Configuring POS connection information

(If the SAVE button was selected prematurely a report dialogue box with date ranges likely showed up, you can go back to configure box from the FILE option in that window or close 'reports' and reopen G9 posUplink).

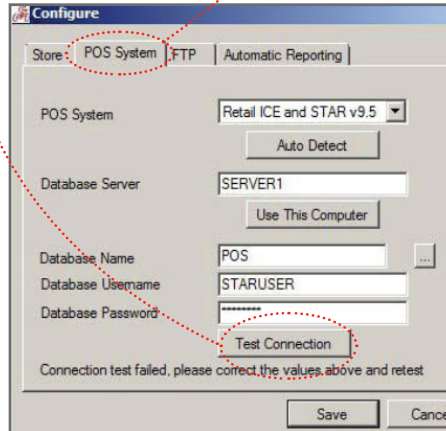
After entering store information, click 'POS System' tab.

Fill in the fields, then click "Test Connection."

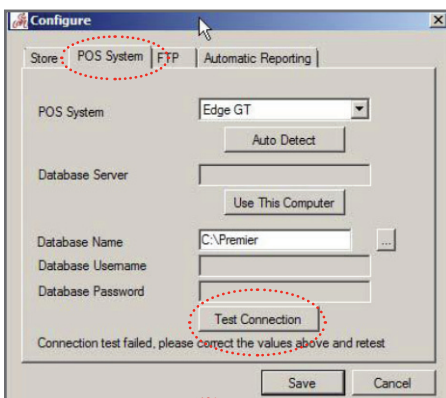
Select "Save".



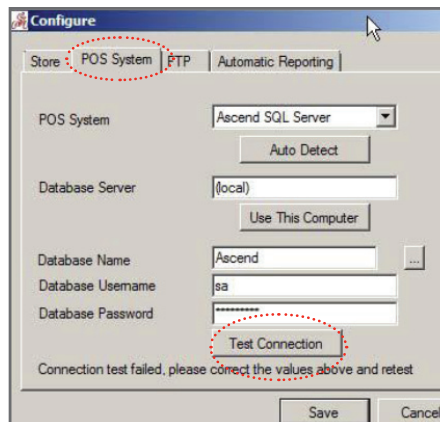
AIMsi



CAM



EDGE



ASCEND

## You have now completed installation and setup for posUplink™

Close this window and reports window if it's still open.

You may receive email notices on status of registration.

Thank you for enrolling with amlbs.com and Vendor-Link Cycling!

### install tips

POS SYSTEM TAB posUplink™ tries to identify your POS system. If not correct, manually select from list. If you don't see your POS system listed or you're not sure contact us at support@vlcycling.com

FIND POS VERSION Go to the "Help" menu in your POS and select "About."

TEST CONNECTION FOR ALL POS TYPES If your connection test does not succeed, double-check your database name, user name, and password and try again. If your connection test still does not succeed contact us at support@vlcycling.com.

If you are an EDGE (RT) Real Time Hosted customer, Edge Technologies must set the auto send for you. If you are a Premier customer Open the Windows Task Scheduler and choose new task. Choose the time and Daily frequency. Browse to the Premier folder and scroll to the "auto\_vl\_send.exe." This is the auto send program. The Vendor Link information will now be sent automatically.



for the  
cycling  
industry